

FOUNDATION FOR INTELLIGENT PHYSICAL AGENTS

FIPA Audio/Visual Entertainment and Broadcasting Specification

Document title	FIPA Audio/Visual Entertainment and Broadcasting Specification		
Document number	XC00081B	Document source	FIPA Architecture Board
Document status	Experimental	Date of this status	2001/08/10
Supersedes	FIPA00015		
Contact	fab@fipa.org		
Change history			
2000/10/17	Approved for Experimental		
2001/08/10	Line numbering added		

© 2000 Foundation for Intelligent Physical Agents - <http://www.fipa.org/>

Geneva, Switzerland

Notice

Use of the technologies described in this specification may infringe patents, copyrights or other intellectual property rights of FIPA Members and non-members. Nothing in this specification should be construed as granting permission to use any of the technologies described. Anyone planning to make use of technology covered by the intellectual property rights of others should first obtain permission from the holder(s) of the rights. FIPA strongly encourages anyone implementing any part of this specification to determine first whether part(s) sought to be implemented are covered by the intellectual property of others, and, if so, to obtain appropriate licenses or other permission from the holder(s) of such intellectual property prior to implementation. This specification is subject to change without notice. Neither FIPA nor any of its Members accept any responsibility whatsoever for damages or liability, direct or consequential, which may result from the use of this specification.

19 **Foreword**

20 The Foundation for Intelligent Physical Agents (FIPA) is an international organization that is dedicated to promoting the
21 industry of intelligent agents by openly developing specifications supporting interoperability among agents and agent-
22 based applications. This occurs through open collaboration among its member organizations, which are companies and
23 universities that are active in the field of agents. FIPA makes the results of its activities available to all interested parties
24 and intends to contribute its results to the appropriate formal standards bodies.

25 The members of FIPA are individually and collectively committed to open competition in the development of agent-
26 based applications, services and equipment. Membership in FIPA is open to any corporation and individual firm,
27 partnership, governmental body or international organization without restriction. In particular, members are not bound to
28 implement or use specific agent-based standards, recommendations and FIPA specifications by virtue of their
29 participation in FIPA.

30 The FIPA specifications are developed through direct involvement of the FIPA membership. The status of a
31 specification can be either Preliminary, Experimental, Standard, Deprecated or Obsolete. More detail about the process
32 of specification may be found in the FIPA Procedures for Technical Work. A complete overview of the FIPA
33 specifications and their current status may be found in the FIPA List of Specifications. A list of terms and abbreviations
34 used in the FIPA specifications may be found in the FIPA Glossary.

35 FIPA is a non-profit association registered in Geneva, Switzerland. As of January 2000, the 56 members of FIPA
36 represented 17 countries worldwide. Further information about FIPA as an organization, membership information, FIPA
37 specifications and upcoming meetings may be found at <http://www.fipa.org/>.

38 Contents

39	1	Scope	1
40	2	General Analysis	2
41	2.1	Assumptions	2
42	2.2	Required Functionality	4
43	2.3	Actors, Roles and Domains	4
44	2.3.1	Agents	4
45	2.3.2	Wrapper Agents	4
46	2.3.3	Domains	5
47	2.4	Generic Model	5
48	2.4.1	Detailed Functions of Agents	5
49	2.4.2	Agent Interactions	6
50	2.5	Scenarios	9
51	2.5.1	Scenario 1	9
52	2.5.2	Scenario 2	9
53	2.5.3	Scenario 3	10
54	2.5.4	Scenario 4	10
55	3	Audio/Visual Entertainment and Broadcasting Ontology	11
56	3.1	Object Descriptions	11
57	3.1.1	Service Description	11
58	3.1.2	User Profile	12
59	3.1.3	Personal Property	12
60	3.1.4	Preferences	13
61	3.1.5	Audio/Visual Object Description	13
62	3.1.6	Parental Rating	14
63	3.1.7	Critic Rating	14
64	3.1.8	TV Programme Properties	14
65	3.1.9	Film Properties	15
66	3.1.10	Music Properties	15
67	3.1.11	Game Properties	15
68	3.2	Interaction Protocols	16
69	3.2.1	Reactive Contract Net	16
70	4	References	17
71			

71 **1 Scope**

72 Today more than ever, there is a perceived need for an effective means of information filtering and retrieval, in
73 particular for digital broadcasting networks. The selection and storage of a viewer's personal preferences from the
74 plenty of programmes on offer can be very impractical; such information has to be provided in a customized manner, to
75 better suit the user's personal preferences. In order to implement information filtering and retrieval, the semantic and
76 syntactic content of the broadcast data streams need to be made compatible to allow a consistent method for selection.
77 It is crucial that human interaction with such a system is as simple and intuitive as possible. Key functionalities such as
78 profiling, filtering, retrieving and interfacing can be made more effective and reliable by introducing agent technology.

79
80 Foreseeable applications in this field are: TV, radio and data broadcasting, electronic newspapers, commercial
81 database services, Internet services, computer aided education, video- and multimedia-on-demand services,
82 entertainment, home automation, etc.

83
84 This specification describes the assessment of FIPA specifications against a prototypical Audio/Video Broadcasting and
85 Entertainment application. The identified necessity for this application is as follows:

86 Information filtering and retrieval,

87
88 Information customisation,

89
90 User friendliness,

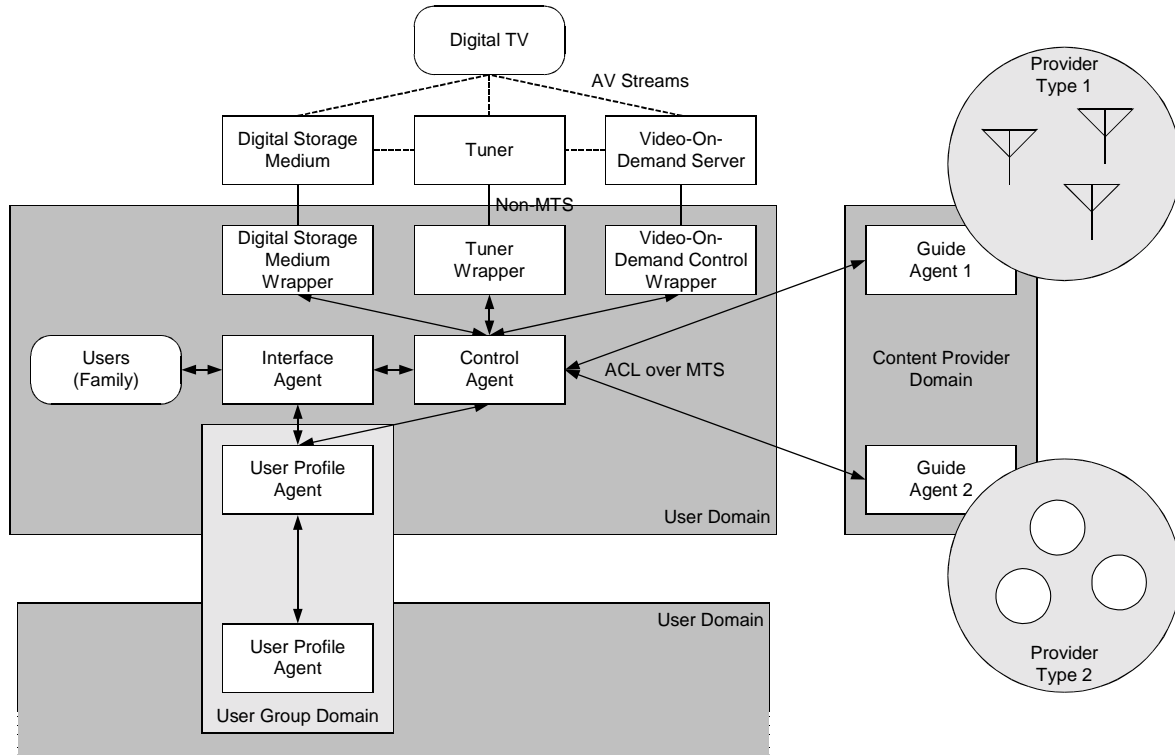
91
92 Home automation, education and entertainment, and,

93
94 Information compatibility.

95
96

962 **General Analysis**

97 The reference model for the Audio/Visual Entertainment and Broadcasting (AVEB) application is given in *Figure 1*. The
 98 application being considered is a simplified one: a digital TV set equipped with a tuner and connected to a Digital
 99 Storage Media (DSM) is installed in a one-family house. Through the system, the members of the family can access a
 100 variety of AV services such as TV broadcast (Type 1) and video-on-demand server (Type 2), expressing their own
 101 preferences and making suitable selections.
 102



103 **Figure 1: Reference Model for the AVEB Application**

104
 105
 106
 107 Given this simple set-up, only one User Profile Agent (UPA) maintains information about all the users and only one
 108 Control Agent (CA) manages the interaction with the broadcast services. Each user has their personal Interface Agent
 109 (IA) and for each home system a user domain is established which collects all agents and wrappers that are needed.
 110 Information pertaining to the profile of users can be exchanged among different home systems to get better
 111 recommendations from similar preferences through another user group domain).
 112

113 Type 1 and Type 2 content providers maintain content descriptions about available Type 1 and Type 2 streams. A
 114 Guide Agent (GA) watches these descriptions and informs the CA of the required AV services and it also notifies the
 115 new services and/or the modification to CA automatically.
 116

117 **2.1 Assumptions**

- 118 1. That there exist content description providers for all contents,
- 119
- 120 2. That the AV streams are transmitted through non-Message Transport System (MTS) channels,
- 121
- 122 3. That there is some mechanism to login and logout the home system,
- 123
- 124 4. That no user may move to another Home System, and,
- 125

- 126 5. That the storage limits of the DSM and charging for programs are not considered.
127

127 2.2 Required Functionality

128 The following key functionalities are identified as necessary for the application:

129

130 1. Building and maintaining the profile of users,

131

132 2. Filtering the incoming AV programs according to users' profile information,

133

134 3. Autonomously querying and replying,

135

136 4. Controlling hardware (for example, DSM),

137

138 5. Being able to recognize/identify the user(s),

139

140 6. Being able to interact with the users in a multi-modal fashion,

141

142 7. Discovering users with similar preferences (inside and outside the user domain) and sharing recommendations
143 among them,

144

145 8. Protecting the home system from misuse and abuse,

146

147 9. Featuring different classes of time-constrained behaviour, and,

148

149 Negotiating queries and quality of service should be considered in the future version of the specification.

150

151 2.3 Actors, Roles and Domains

152 2.3.1 Agents

153 With respect to *Figure 1*, four types of agents have been identified with the AVEB application:

154

155 **Interface Agent (IA)**

156 This agent interacts directly with user via natural language dialogue, browser and other modalities, interprets the
157 user's requests into ACL and presents information to the user in a user-friendly manner.

158

159 **User Profile Agent (UPA)**

160 This agent maintains the user's profile, provides information on user's preferences (with content regulation) for
161 filtering and retrieval functions and exchanges the preferences within user group domain.

162

163 **Control Agent (CA)**

164 This agent promotes interaction with other agents to accomplish a given goal including getting user's interaction
165 through the IA, consulting user's preference with the UPA and collaborating with the GA to search content matching
166 the user's preference and it controls hardware devices through wrapper agents.

167

168 **Guide Agent (GA)**

169 This agent maintains a list of AV programs, advertises its contents and answer queries from the control agent. It
170 also collaborates with the CA for filtering the content list for the purpose of presenting to the user in a user-friendly
171 and customised way.

172

173 2.3.2 Wrapper Agents

174 Additionally, three types of wrapper agents have been identified:

175

176 **Digital Storage Media Wrapper (DSMW)**

177 This agent interfaces with a DSM.

178
 179 **Tuner Wrapper (TW)**
 180 This agent interfaces with a tuner which controls Type 1 streams.

181
 182 **VOD Controller Wrapper (VCW)**
 183 This agent interfaces with the video-on-demand controller which controls Type 2 streams.
 184

185 **2.3.3 Domains**

186 *Table 1* describes the domains that exist within the AVEB application and the agents that register with them. A UPA
 187 must register with a DF in a user domain in order to communicate with IAs and CAs. It must also register with a DF in a
 188 user group domain in order to communicate with other UPAs.
 189

Domain	Description	Registered Agent	Wrapper Agent
User Domain	These domains present AV programmes to users. Agents in this domain cooperate to retrieve and filter AV programmes by user request or preference using the index data attached to the programmes.	CA UPA IA	TW DSMW VCW
User Group Domain	These domains allow groups of users to share information and preferences about programmes	UPA	
Content Provider Domain	These domains provide the content descriptions of AV streams from all content providers.	Type 1 GA Type 2 GA	

190
 191 **Table 1: Agent Registrations in Domains**
 192

193 **2.4 Generic Model**

194 **2.4.1 Detailed Functions of Agents**

195 **2.4.1.1 Interface Agent**

- 196 Translates the user request into ACL, for example, template-based natural language, search engine-like Boolean logic plus keywords, menu-based composition, etc.
- 197
- 198
- 199 Passes user requests to the CA and receives answers from the CA.
- 200
- 201 Passes user requests to the UPA and receives answers from the UPA.
- 202
- 203 Translates ACL into the user language.
- 204
- 205 Displays recommendations autonomously retrieved by the CA.
- 206
- 207 Receives user preferred interaction modalities from the user and changes the mode accordingly.
- 208
- 209 Senses the presence of user (for example, initiating dialogue with the user when they move the mouse).
- 210
- 211 Logs the user into and out of the system.
- 212

213 **2.4.1.2 Control Agent**

- 214 Contacts GAs to locate specific programmes.
- 215
- 216 Contacts GAs to acquire unspecific programme listings.
- 217
- 218 Receives user request from the IA.

219
 220 Requests information about user characteristics from the UPA.
 221
 222 Receives user characteristics information from the UPA.
 223
 224 Presents to the IA the selection of available programmes.
 225
 226 Formulates appropriate queries to the UPA and the GA.
 227
 228 Engages in a collaborative dialogue with the GA for the purpose of refining the list of programmes.
 229
 230 Controls the DSM via the DSMW so that the DSM can have access to the content.
 231
 232 Controls what is played on the tuner by relaying commands through the TW.
 233

234 **2.4.1.3 User Profile Agent**
 235 Receives user request in ACL form from the IA and analyses it to update the user profile.
 236
 237 Sends information regarding the preferred method of presentation or interaction of the user based on the user
 238 profile to the IA.
 239
 240 Receives requests from the CA and returns the proper information about user's preferences. The UPA does not
 241 give the entire profile, but gives user-related answers in collaborative and cooperating manner.
 242
 243 Manages the user profile database.
 244
 245 Requests other UPAs to inform it about other users' characteristics.
 246
 247 Receives request from other UPAs about user characteristics (and returns them).
 248

249 **2.4.1.4 Guide Agent**
 250 Gets requests from the CA and returns the desired contents list.
 251
 252 Controls and monitors the creation and update of the content index.
 253
 254 It engages in a collaborative dialogue with the CA for further restricting and refining the content index.
 255

256 **2.4.2 Agent Interactions**

257 **2.4.2.1 User Profile Agent to Interface Agent**
 258 The interaction between these two agents is aimed at exchanging information relevant for user profiling.
 259
 260 1. The IA informs the UPA when a user logs in, for example, John logs in:
 261
 262 <IA, inform (UPA, login (John))>
 263
 264 2. The IA informs the UPA of users selections and preferences, for example, John selects the program, *Indiana Jones*
 265 *and the Temple of Doom*:
 266
 267 <IA, inform(UPA, select (John, Indiana-Jones-and-the-Temple-of-Doom))>
 268
 269 John scores Indiana Jones and the Temple of Doom with 0.4:
 270
 271 <IA, inform(UPA, prefer (John, Indiana-Jones-and-the-Temple-of-Doom, 0.4))>

272
273
274
275
276
277
278
279
280
281
282
283
284
285
286

And, John likes sport programmes with preference score of at least 0.4:

```
<IA, inform(UPA, forall ?prg (genre (?prg) = Sport => prefer (John, ?prg, 0.4))>
```

3. The UPA informs the IA of user's preferred interaction modalities, for example, John likes the keyboard with a preference score of 1:

```
<IA, query-ref (UPA, iota ?x (modality (?x) and prefer (John, ?x, 1))>
<UPA, inform (IA, iota ?x (modality (?x) and prefer (John, ?x, 1)) = Keyboard)>
```

4. The IA informs the UPA that the user has logged out, for example, John logs out:

```
<IA, disconfirm (UPA, login (John))>
```

287
288
289
290
291
292
293
294
295
296
297
298
299
300
301
302

2.4.2.2 User Profile Agent to User Profile Agent

The interaction between these two agents is aimed at sharing user profile information across different home systems.

1. UPA1 requests whether UPA2 can make accessible a specific piece of information, P , concerning the profile of the users it serves¹:

```
<UPA1, query-if (UPA2, available (P, UPA1))>
```

2. UPA2 informs UPA1 about the accessibility of P ²:

```
<UPA2, inform (UPA1, available (P, UPA1))>
```

3. When accessibility of P is agreed upon, UPA1 requests it.
4. UPA2 sends P to UPA1.

303
304
305
306
307
308
309
310
311
312
313
314

2.4.2.3 User Profile Agent to Control Agent

The interaction of these two agents is aimed at informing the CA about the user's characteristics.

1. The CA requests information from the UPA about the characteristics of users, for example, John's date of birth and occupation:

```
<CA, query-ref (UPA, iota ?x birthdate (John) = ?x);
query-ref (UPA, iota ?x occupation (John) = ?x)>
```

2. The UPA sends requested information to CA (if available and accessible using the same scheme as in points 2 to 4 in section 2.4.2.3, *User Profile Agent to Control Agent*).

315
316
317
318
319
320
321

2.4.2.4 Interface Agent to Control Agent

The interaction between these two agents is aimed at delivering to the CA the requests of the users.

1. The IA informs the CA whenever the users log in and log out, for example, John logging in:

```
<IA, inform (CA, login (John))>
```

¹ This cannot currently be expressed in FIPA ACL since P is a proposition which occurs as an argument of a predicate. An approximation would be `<UPA1, query-if (UPA2, P)>`.

² Again, this cannot currently be expressed in FIPA ACL. An approximation which includes points 3 and 4 would be `<UPA2, inform-if (UPA1, P)>` when P is available, and, `<UPA2, refuse (UPA1, inform-if (UPA1, P), Not-Available)>` when P is not available.

322 2. The IA informs the CA what are the current requests of the user, for example, John wants to watch *Indiana Jones*
 323 *and the Temple of Doom*:

324
 325 <IA, inform(CA, like-to-watch (John, Indiana-Jones, Now))>
 326

327 3. The CA sends to the IA the information about available programmes (as collected from the content providers'
 328 domains and the local DSM), for example, *Indiana Jones and the Temple of Doom* will be broadcast on TV on P1
 329 and is stored in the video-on-demand stream V1:

330
 331 <CA, inform (IA, broadcast (Indiana-Jones, P1) and
 332 vod (Indiana-Jones-and-the-temple-of-doom, V1))>
 333

334 2.4.2.5 Control Agent to Tuner Wrapper and Video-On-Demand Control Wrapper Agents

335 The CA controls the tuner (for Type 1 streams) and video-on-demand controller (for Type 2 streams) through the tuner
 336 and video-on-demand wrapper agents to initiate viewing. The TW and VCW agents translate the commands issued by
 337 an agent into hardware-dependent commands.

338
 339 1. The CA issues a command to the devices through the TW and VCW agents, for example, setting tuner 1 (already
 340 on channel 3) to switch to channel 2:

341
 342 <CA, request (TW, invoke (Tuner1, "switch to channel 2"))>
 343

344 2.4.2.6 Control Agent to Digital Storage Medium Wrapper Agent

345 The CA controls the DSM through the DSMW agent to record AV streams. It can possibly control the DSM to playback
 346 the recorded contents corresponding to the users' requests, however, this functionality is an open issue in this version
 347 of the application.

348
 349 1. The CA issues a command to the DSM through the DSMW agent, for example, playing back programme P1:

350
 351 <CA, request (TW, invoke (DSM1, "playback programme p1"))>
 352

353 2.4.2.7 Guide Agent to Control Agent

354 The interaction between these two agents is aimed at getting information about content descriptions.

355
 356 1. The CA requests content descriptions from the GA, for example, the genre of programme P1:

357
 358 <CA, query-ref (GA, iota ?x genre (P1) = ?x)>
 359

360 2. The GA replies the appropriate content descriptions corresponding to the requests, for example, the genre of P1 is
 361 sport:

362
 363 <GA, inform (CA, (iota ?x genre (P1) = ?x) = Sport)>
 364

365 3. The GA autonomously informs the CA of modifications to the content descriptions (for example, a TV programme is
 366 postponed) and service categories (for example, a new video-on-demand provider begins a service). For example,
 367 program P1 is delayed from 9pm until 10pm:

368
 369 <GA, disconfirm (CA, start-time (P1) = 9pm);
 370 inform (CA, start-time (P1) =10pm)>
 371

372 4. The CA and GA collaborate for better filtering, for example, John watched *Indiana Jones and the Temple of Doom*
 373 and rated it 0.9:

374
 375 <CA, inform (GA, rate (John, Indiana-Jones-and-the-Temple-of-Doom, 0.9))>
 376

377 Another example could be that average rating of *Indiana Jones and the Temple of Doom* is 0.8:

378
 379 <GA, inform (CA, average-rate (Indiana-Jones-and-the-Temple-of-Doom, 0.8))>
 380

381 2.4.2.8 Interface Agent to User

382 The interaction between this two entities allows the user to access the home system (user recognition, authentication
 383 and log-in) and then to express their own preferences and requests.

384

385 1. The user makes the home system aware of their intention to access it.

386

387 2. The IA requests the user prove their identity.

388

389 3. The IA requests the user to enter profile information.

390

391 4. The IA informs the user of a suggested set of programmes that are available.

392

393 5. The user makes selections from given (possibly displayed) material which may contain help or guidance for the
 394 user.

395

396 2.5 Scenarios

397 2.5.1 Scenario 1

398 The home system offers selected programmes to a user based on their preference. In this scenario, a member of the
 399 family logs in the system and the system retrieves the user profile that describes their preferences, gender, age, etc.
 400 Then, it recommends to the user a set of programmes to be viewed and when the user selects one programme, the IA
 401 informs the UPA of their choice so that it can appropriately update the user profile, if necessary. The IA then asks the
 402 CA to retrieve the programme by controlling devices through the TW, VCW or DSMW agents.

403

404 1. In the initial situation, the user domain is established and the UPA and CA are *active* while the IA is *suspended*. The
 405 DF knows the agent-identifier of DFs in the content provider domain.

406

407 2. When a new user registers with the user domain, an IA for the user is created and suspended and a new user
 408 profile is created by the UPA.

409

410 3. When a user logs in, the user's IA becomes active and the IA, UPA and CA start to communicate.

411

412 4. When the IA recommends to the user a set of AV programmes, the IA informs the CA about user's name, the CA
 413 asks for the user's profile from the UPA, the CA retrieves the candidate programme IDs from the GA and the CA
 414 then informs the IA of the results. Finally, the IA asks for the user's profile from the UPA and then builds a menu
 415 and displays it for the user.

416

417 5. When the IA offers a selected programme to the user, it informs the UPA of the user's choice, asks the CA to
 418 control the video-on-demand controller to receive the Type 2 stream, control the tuner to filter the Type 1 stream as
 419 it begins and control the DSM to store the AV stream.

420

421 6. When the user logs out, the system stops the service and the user's IA becomes *suspended*.

422

423 2.5.2 Scenario 2

424 The home system automatically stores selected programmes for a user. The CA evaluates an incoming content
 425 descriptions from the GA and consults the UPA; if there are any matches with the user's preference, then the CA stores
 426 the programme into the DSM.

427

428 1. In the initial situation, the user domain is established and the UPA and CA are initially *active* while the IA is
 429 *suspended*.

430
431
432
433
434
435
436
437

2. When a content provider delivers a new content description or modifies it, the GA detects the modification and informs the CA.
3. When the CA receives the new content description of modification notice, it asks the UPA whether the content matches the user's preferences; if it does, then the CA makes a plan to get the content and instructs the DSM to record the content when it starts.

438 **2.5.3 Scenario 3**

439 In this scenario, when the user logs in, the home system automatically makes a viewing plan appropriate to the user by
440 consulting their profile. The plan consists of a series of content including those recorded in the DSM.

441
442
443
444
445
446
447
448

1. When the user logs in, the IA informs the CA that the user wants to make a plan. The CA obtains the content descriptions of the recorded streams in the DSM through DSMW agent as well as the content description from the GA. From this is constructs a viewing plan for the user.
2. After the CA makes the plan, the CA controls the DSM, video-on-demand controller and tuner through the wrapper agents according to the plan.

449 **2.5.4 Scenario 4**

450 The schedule of the programme which the user plans to watch may be modified due to special news or sport events
451 that over-run. The modification should be notified with the CA.

452
453
454
455
456
457
458
459
460
461
462
463
464
465
466

1. When the CA makes the plan according to Scenario 3 or the user directly asks CA to reserve programs, the CA requests the GA to notify it when the schedule of the programme is modified. The GA registers this request and watches the content descriptions of registered programmes.
2. When the GA detects a modification to a registered programme, it informs CA of the modification. The CA checks whether the new schedule conflicts with other programmes in the plan and determines whether to hold or cancel the programme. The CA informs the GA of the decision, which dismisses the registration if the programme is cancelled or continues to watch if it being held.
3. When the program starts, the CA controls the tuner or DSM to view or record the program.
4. When the program finishes the GA discards the registration.

3 Audio/Visual Entertainment and Broadcasting Ontology

3.1 Object Descriptions

This section describes a set of frames, that represent the classes of objects in the domain of discourse within the framework of the FIPA-AVEB ontology.

The following terms are used to describe the objects of the domain:

Frame. This is the mandatory name of this entity, that must be used to represent each instance of this class.

Ontology. This is the name of the ontology, whose domain of discourse includes the parameters described in the table.

Parameter. This is the mandatory name of a parameter of this frame.

Description. This is a natural language description of the semantics of each parameter.

Presence. This indicates whether each parameter is mandatory or optional.

Type. This is the type of the values of the parameter: Integer, Word, String, URL, Term, Set or Sequence.

Reserved Values. This is a list of FIPA-defined constants that can assume values for this parameter.

3.1.1 Service Description

This type of object represents the description of each service registered with the DF.

Frame	service-description			
Ontology	FIPA-Agent-Management			
Parameter	Description	Presence	Type	Reserved Values
name	The name of the service.	Mandatory	String	
type	The type of the service.	Mandatory	String	fipa-ia fipa-upa fipa-ca fipa-ga fipa-tw fipa-dsmw fipa-vcw
ontology	A list of ontologies supported by the service.	Optional	Set of String	FIPA-Agent-Management FIPA-AVEB
protocol	A list of protocols supported by the service.	Optional	Set of String	
properties	A list of properties that discriminate the service.	Optional	Set of property	

491
492

492 **3.1.2 User Profile**

493 This object represents an essential source of information on the AV objects for selection and classification that are likely
 494 to be of interest to the user. The user preference denotes dynamic properties of the user preferences or behaviour on
 495 the objects. Thus, values for those parameters in the user preference will change along with time by the learning
 496 process.
 497

Frame Ontology	user-profile FIPA-AVEB			
Parameter	Description	Presence	Type	Reserved Values
property	The personal details of the user.	Mandatory	personal-property	
preferences	The preferences of the user.	Mandatory	preferences	

498

499 **3.1.3 Personal Property**

500 This object contains static parameters describing the user's general and personal information.
 501

Frame Ontology	personal-property FIPA-AVEB			
Parameter	Description	Presence	Type	Reserved Values
username	The identifier of the user.	Mandatory	String	
gender	The gender of the user.	Optional	String	Male Female
birthdate	The date of birth of the user.	Optional	DateTime	See [FIPA00070]
birthplace	The place of birth of the user.	Optional	String	
nationality	The nationality of the user.	Optional	String	See [ISO3166]
languages	A list of the languages understood by the user.	Optional	Set of String	See [ISO639]
address	The address of the user.	Optional	String	
access-means	A list of the access types preferred by the user.	Optional	Set of String	
occupation	The occupation of the user.	Optional	String	
habits	A list of habits known about the user.	Optional	Set of String	Drinking Painting Smoking ...
interests	A list of interests known about the user.	Optional	Set of String	Golf Basketball Running ...
payment-means	A list of payment means of the user.	Optional	Set of String	
notes	Additional information about the user.	Optional	Set of String	

502

503

503 **3.1.4 Preferences**

504 This object contains static parameters describing about the user's general and personal information.

505

Frame Ontology	preferences FIPA-AVEB			
Parameter	Description	Presence	Type	Reserved Values
modality	A list of interaction modalities preferred by the user in descending order of preference.	Mandatory	Sequence of String	
av-preferences	A list of preferences for AV object descriptions.	Optional	Set of Integer	

506

507 **3.1.5 Audio/Visual Object Description**

508 This object represents media content that are processed by the AVEB application.

509

Frame Ontology	av-description FIPA-AVEB			
Parameter	Description	Presence	Type	Reserved Values
identifier	The identifier of the content.	Mandatory	String	
genre	A list of genres that classify the content.	Optional	Set of String	Documentary Sport ...
language	A list of languages in which the content is represented	Optional	Set of String	See [ISO639]
title	A list of titles of the content.	Optional	Set of String	
director	The director of the content.	Optional	String	
cast	A list of cast that appear in the content.	Optional	Set of String	
date	The date of creation of the content.	Optional	String	
keywords	A list of keywords which describe the content.	Optional	Set of String	
summary	A summary of the content.	Optional	String	
parental-ratings	A list of parental ratings associated with the content.	Optional	Set of parental-rating	
critic-ratings	A list of critics' ratings associated with the content.	Optional	Set of critic-rating	
provider	The provider of the content.	Optional	String	
cost	The cost of obtaining the content.	Optional	String	

510

511

511 **3.1.6 Parental Rating**

512 This object represents parental ratings that are associated with the av-description.

513

Frame Ontology	parental-rating FIPA-AVEB			
Parameter	Description	Presence	Type	Reserved Values
country	The country in which the rating was given to the content.	Mandatory	String	See [ISO3166]
rating	The rating given to the content.	Mandatory	String	

514

515 **3.1.7 Critic Rating**

516 This object represents ratings by critics that are associated with the av-description.

517

Frame Ontology	critic-rating FIPA-AVEB			
Parameter	Description	Presence	Type	Reserved Values
name	The name of the critic who reviewed the content.	Mandatory	String	
rating	The rating that the critic gave to the content.	Mandatory	String	

518

519 **3.1.8 TV Programme Properties**

520 This object represents specific TV programme information.

521

name	Description	Presence	Type	Reserved Values
av-description	The AV information of the programme.	Mandatory	av-description	
start-time	The start date and time of the programme.	Mandatory	DateTime	
duration	The duration of the programme.	Mandatory	Number	
status	The running status of the programme.	Mandatory	Boolean	
scramble	The scramble status of the programme.	Optional	Boolean	
bit-rate	The bit-rate at which the programme is transmitted.	Optional	String	
encoding	The mechanism used to encode the programme.	Mandatory	String	

522

523

523 **3.1.9 Film Properties**

524 This object represents specific film information.

525

name	Description	Presence	Type	Reserved Values
av-description	The AV information of the film.	Mandatory	av-description	
duration	The duration of the film.	Mandatory	Number	
scramble	The scramble status of the film.	Optional	Boolean	
bit-rate	The bit-rate at which the film is transmitted.	Optional	String	
encoding	The mechanism used to encode the film.	Mandatory	String	

526

527 **3.1.10 Music Properties**

528 This object represents specific music information.

529

name	Description	Presence	Type	Reserved Values
av-description	The AV information of the music.	Mandatory	av-description	
composer	A list of composers of the music.	Mandatory	Set of String	
duration	The duration of the music.	Mandatory	Number	
bit-rate	The bit-rate at which the music is transmitted.	Optional	String	
encoding	The mechanism used to encode the music.	Mandatory	String	

530

531 **3.1.11 Game Properties**

532 This object represents specific game information.

533

name	Description	Presence	Type	Reserved Values
av-description	The AV information of the game.	Mandatory	av-description	
machines	A list of machines on which the game will run.	Mandatory	Set of String	
devices	A list of devices required to play the game.	Mandatory	Set of String	

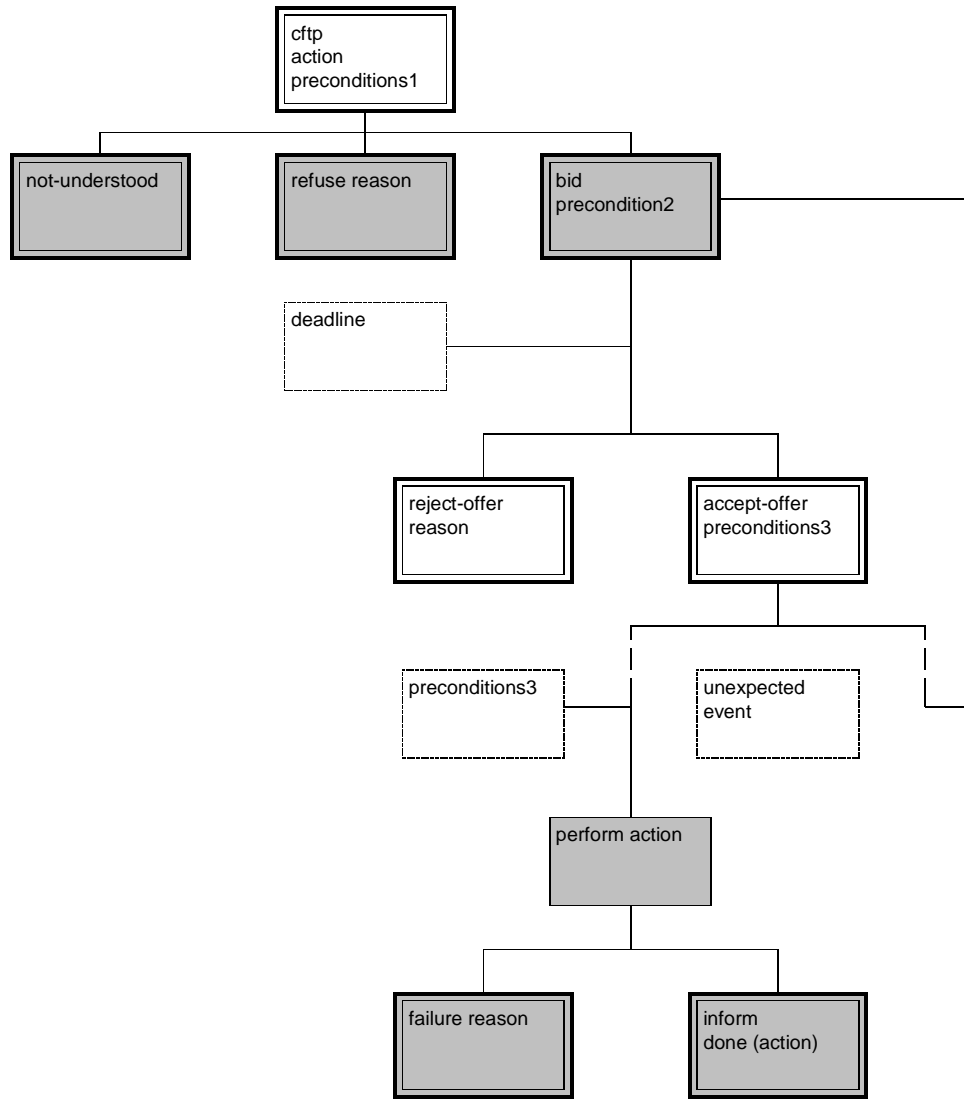
534

535

535 **3.2 Interaction Protocols**

536 **3.2.1 Reactive Contract Net**

537 The FIPA-Reactive-Contract-Net interaction protocol given in *Figure 2* is used between the CA and the GA to
538 obtain the notification about the change in a programme as described in section 2.5.4, *Scenario 4*. This interaction
539 protocol is a modification of the FIPA-Contract-Net interaction protocol (see [FIPA00029]).
540



541
542
543 **Figure 2:** Reactive Contract Net Interaction Protocol
544

544 **4 References**

545 [FIPA00023] FIPA Agent Management Specification. Foundation for Intelligent Physical Agents, 2000.
546 <http://www.fipa.org/specs/fipa00023/>

547 [FIPA00029] FIPA Contract Net Interaction Protocol Specification. Foundation for Intelligent Physical Agents, 2000.
548 <http://www.fipa.org/specs/fipa00029/>

549 [FIPA00070] FIPA ACL Message Representation in String Specification. Foundation for Intelligent Physical Agents,
550 2000.
551 <http://www.fipa.org/specs/fipa00070/>

552 [ISO639] Codes for the Representation of Names of Languages. International Standards Organisation, 1988.
553 <http://www.iso.ch/cate/d4766.html>

554 [ISO3166] Codes for the Representation of Names of Countries and Their Subdivisions, Part 1: Country Codes.
555 International Standards Organisation, 1997.
556 <http://www.iso.ch/cate/d24591.html>